

- Bringing People Inside - Supervised Injection in Vancouver

Chris Van Veen MSW, PhD(c)
Vancouver, Canada

Context of the Downtown East Side of Vancouver



Massive low
income
population

ONE THOUSAND CROSSES

1990s Population



between 1988 and 1998
2,413 deaths by
heroin overdose

Crisis Peaked in 1998 with
413 preventable deaths.

Taking a complicated problem,
but keeping the message
simple



A Four Pillars Approach

A FRAMEWORK FOR ACTION

A Four-Pillar Approach
to Drug Problems in Vancouver

PREVENTION

TREATMENT

ENFORCEMENT

HARM REDUCTION



Source: *Drug Policy Alternatives*, City of Vancouver
April 2016, p. 40



LOCATION AND TIME

Openheimer Park at Powell St.
and Jackson St., Vancouver BC
8:30am to 5:00pm

Ticket price includes breakfast, coffee,
snacks, lunch, and an afternoon snack.
To register for the event or to get more
information, leave a message at 609-
7358 or call the CBO ticket hotline
at 904 5657.

PARKING/SHUTTLEBUS

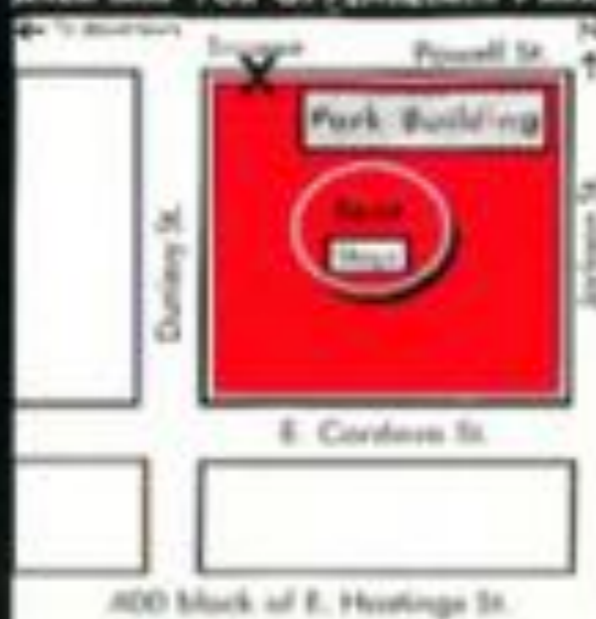
Public parking is available in
Downtown on Keefer St. at Columbia.
This is at a cost of \$4.00 for the day.
A free shuttle bus will run to the
conference from the west side of
Columbia St. at Keefer, outside of the
new wing of the Chinese Cultural
Centre. Shuttle service will start at
8:00am and run until 8:30am. Return
trips to the parking will run from
5:00pm to 6:30pm.

PARTICIPATION IS IMPORTANT

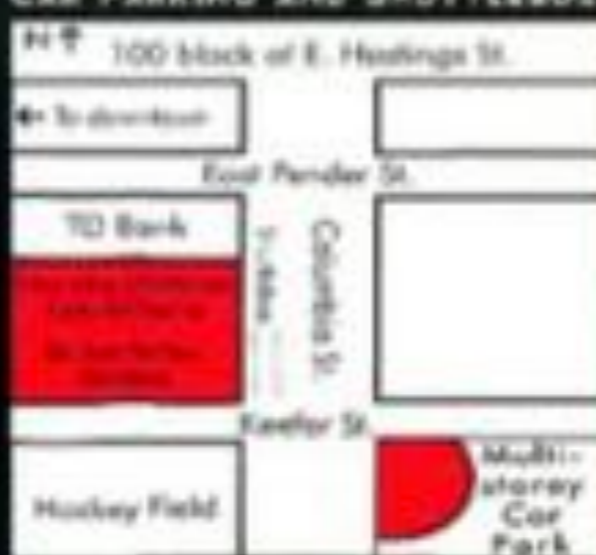
Thank you in advance for taking part in
this valuable discussion as a start to
finding a workable solution. Vancouver's
Downtown has a crisis in the grip of a
declared public health emergency.
Hundreds of people are dying. The
information at this conference is
intended to help us come up with a
solution. As this will be a working day
with a lot of information, it is critical to
be there for the whole conference.

Sorry, but no late admission.

AREA MAP FOR OPPENHEIMER PARK



CAR PARKING AND SHUTTLEBUS



Not including the corner of Columbia St. and Keefer
St., parking is free from 6-11 AM for the day.

HOSTED BY:
DANIEL RICHIER OF
CBC TV'S *THE LIFE*
AND
IAN MUIREW OF
THE *VANCOUVER SUN*

INTERNATIONAL SPONSORS FROM:
LONDON, ENGLAND
NEW YORK, USA
FRANKFURT, GERMANY
LONDON, SWITZERLAND

TICKET NOTES

SPONSORED TICKETS AVAILABLE
THROUGH CBO AT 904.5657 OR
LEAVE A REQUEST WITH YOUR
ADDRESS AND PHONE NUMBER
AT 609.7358

TRANSPORTATION ARRANGEMENTS
AND ACCOMMODATION ADVISED BY

GENEVA BOWEN
2070 VANCOUVER
BELL AVENUE



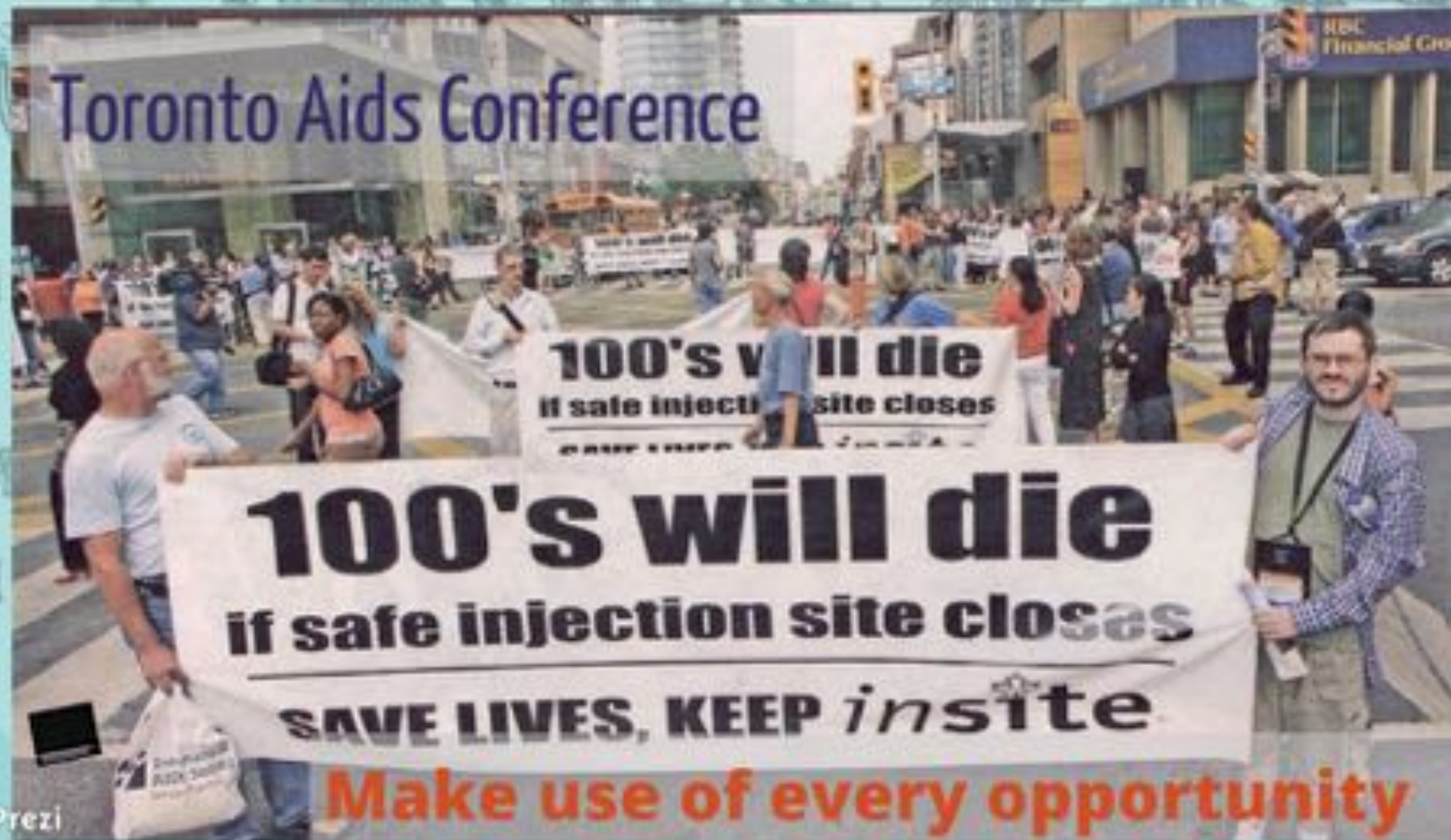
CARNEGIE COMMUNITY
ASSOCIATION
PRESENTS



A ONE-DAY INTERNATIONAL
SYMPOSIUM ON SOLUTIONS TO
DRUG, CRIME AND ADDICTION
IN THE INNER CITY.

FRIDAY, NOVEMBER 20, 1998

Toronto Aids Conference



100's will die
if safe injection site closes

100's will die
if safe injection site closes

SAVE LIVES, KEEP *insite*


Make use of every opportunity



Insite has **76%** support from Vancouver residents
- (Mustel Research) June 27th 2007

THE EVIDENCE

Over **40** peer-reviewed studies showed that InSite...

A black and white photograph of a man with dark, curly hair, wearing a dark t-shirt, standing in a hallway with his arms crossed. He is leaning against a stone pillar. The hallway has white walls and a tiled floor. The image is part of a Prezi presentation, with a teal border on the left and right sides containing faint sketches of various objects like a cup, a pen, and a hand.

Insite is being used by the people it was intended for... The SIS has attracted and retained a high risk population of IDU who are at heightened risk for overdose and HIV infection.

Wood et al., American Journal of Preventative Medicine, 2005
Wood et al., American Journal of Public Health, 2006



Insite has reduced HIV risk behaviour (syringe sharing)

Wood et al., American Journal of Infectious Diseases, 2005.
Kerr et al., The Lancet, 2005.






Many individuals at risk for HIV infection receive safer injection education at the SIS, and increases in safe micro-injecting practices have been observed

Wood et al., *International Journal of Drug Policy*, 2005,
Stoltz et al., *Journal of Public Health*, 2007





Of one group of 1000 users followed, 18% began a detox program at some point during the study period.

Wood et al., New England Journal of Medicine, 2006.

Rate of Detox Service Use
and It's impact among a
Cohort of SIF users - In
the year after Insite
opened, there was a 33%
increase in the uptake of
detox service use.

Wood et al., Rate of detoxification service use and its impact among a
cohort of supervised injection facility users - Addiction, 2007




Prezi

The SIS has been associated with reductions in public disorder related to injection drug use. There has been a 45% decrease in open drug use as a result of InSite.

Wood et al., Canadian Medical Association Journal, 2004

Petrar et al., Addictive Behaviors, Stoltz et al., Journal of Public Health, 2007





The establishment of the SIS has NOT prompted adverse changes in community drug use patterns.


Kerr et al., British Medical Journal, 2006





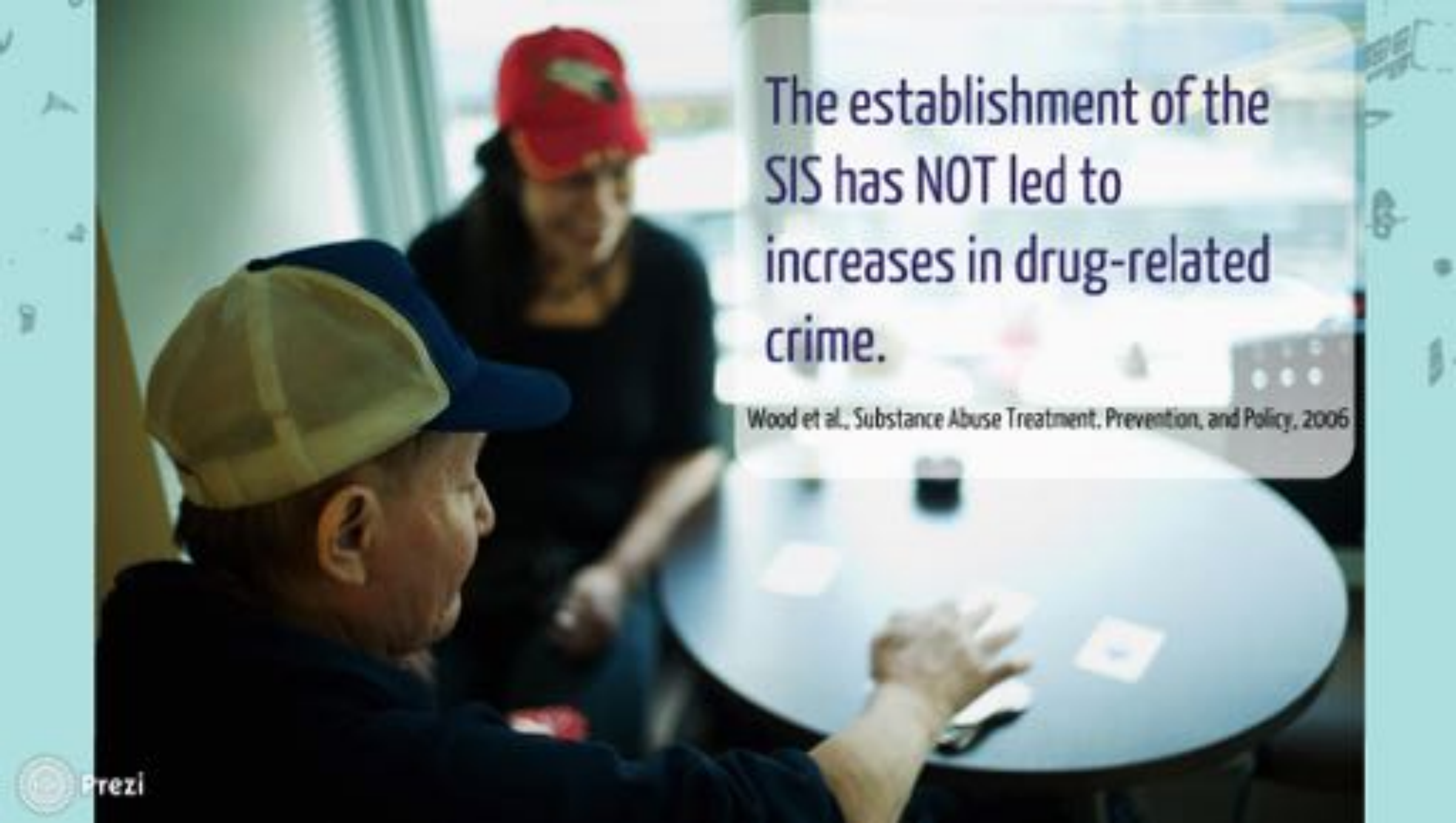
The establishment of the
SIS has NOT prompted
initiation into injection
drug use.

Kerr et al., American Journal of Public Health, 2007



Insite offers medical care for Injection Related Infections.

Wood et al., Canadian Medical Association Journal, 2004
Petrar et al., Addictive Behaviors, Stoltz et al., Journal
of Public Health, 2007



The establishment of the
SIS has NOT led to
increases in drug-related
crime.

Wood et al., Substance Abuse Treatment, Prevention, and Policy, 2006

A photograph of two women in an indoor setting. The woman on the left is younger, wearing a red beret and a grey jacket, smiling broadly with her right hand raised in a peace sign. The woman on the right is older, wearing sunglasses and a maroon jacket, embracing the younger woman from behind. In the background, there is a white water dispenser on a wooden counter. The text 'Insite increases the safety of Women who inject drugs.' is overlaid on the left side of the image.

Insite increases
the safety of
Women who
inject drugs.

Fairburn N, et al., Social Sciences
and Medicine, 2008



Insite is associated
with improved
health and cost
savings, even with
conservative
estimates of
efficacy.

Ahmed M. Bayoumi,
CMAJ., November 2008.

Insite was associated
with an incremental net
savings of \$14 M over 10
years.

Ahmed M. Bayoumi, CMAJ., November 2008.





"Dehumanization, although a concrete historical fact, is not a given destiny but the result of an unjust order that engenders violence in the oppressors, which in turn dehumanizes the oppressed."

Paulo Freire, Pedagogy of the Oppressed