

- Bringing People Inside - Supervised Injection in Vancouver

Chris Van Veen MSW, PhD(c)
Vancouver, Canada

Context of the Downtown East Side of Vancouver



Massive low
income
population

ONE THOUSAND CROSSES

1990s Population



between 1988 and 1998
2,413 deaths by
heroin overdose

Crisis Peaked in 1998 with
413 preventable deaths

Taking a complicated problem,
but keeping the message
simple



A Four Pillars Approach

A FRAMEWORK FOR ACTION

A Four-Pillar Approach
to Drug Problems in Vancouver

PREVENTION

TREATMENT

ENFORCEMENT

HARM REDUCTION



Donald MacPherson,
Drug Policy Coordinator, City of Vancouver
April 24, 2001



LOCATION AND TIME

Oppenheimer Park at Powell St.
and Jackson St., Vancouver BC
8:30am to 5:00pm

TICKETS

Ticket price includes breakfast, coffee
breaks, lunch, and an afternoon snack.
To register for the event or to get more
information, leave a message at 609-
7358 or call the CBO ticket hotline
at 904-5657.

PARKING/SHUTTLEBUS

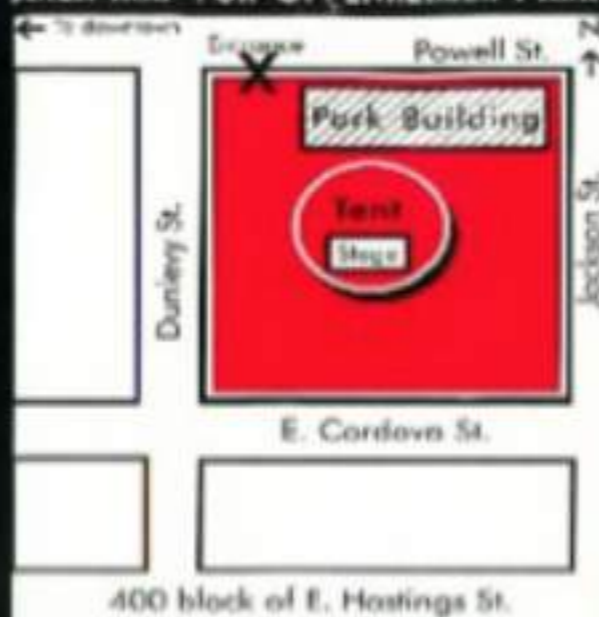
Parkade parking is available in
Chinatown on Keefer St. at Columbia.
This is at a cost of \$4.00 for the day.
A free shuttle bus will run to the
conference from the west side of
Columbia St. at Keefer, outside of the
new wing of the Chinese Cultural
Centre. Shuttle service will start at
8:00am and run until 8:25am. Return
trips to the parkade will run from
5:00pm to 6:30pm.

PARTICIPATION IS IMPORTANT

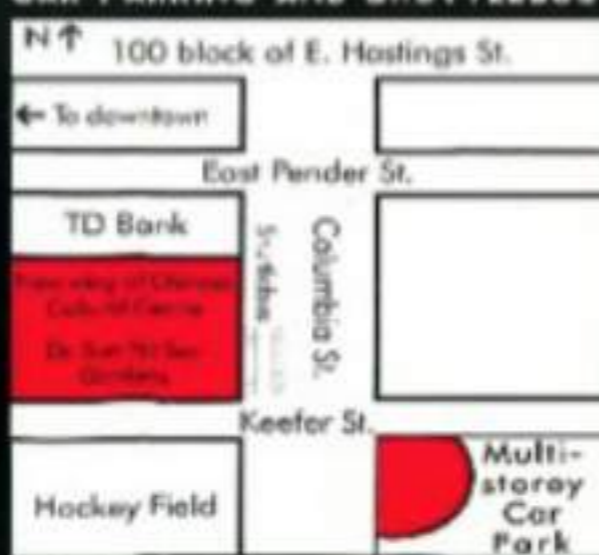
Thank you in advance for taking part in
this valuable discussion as a start to
finding a workable solution. Vancouver's
Downtown Eastside is in the grip of a
declared public health emergency.
Hundreds of people are dying. The
information at this conference is
intended to help us come up with a
solution. As this will be a working day
with a lot of information, it is critical to
be there for the whole conference.

Sorry, but no late admission.

AREA MAP FOR OPPENHEIMER PARK



CAR PARKING AND SHUTTLEBUS



Parkade parking the corner of Columbia St. and Keefer
St., parking in 3y from 1-4 for the day.

HOSTED BY:

DANIEL RICHLER OF
CBC TV'S BIG LIFE
AND
IAN MULGREW OF
THE VANCOUVER SUN

INTERNATIONAL SPEAKERS FROM:

LIVERPOOL, ENGLAND
NEW YORK, USA
FRANKFURT, GERMANY
ZURICH, SWITZERLAND

TICKET HOTLINE:

SPONSORED TICKETS AVAILABLE
THROUGH CBO AT 904-5657 OR
LEAVE A REQUEST WITH YOUR
ADDRESS AND PHONE NUMBER
AT 609-7358

TRANSPORTATION, REFRESHMENTS, AND ACCOMMODATION PROVIDED BY:

BRITISH AIRWAYS
HOTEL VANCOUVER
REEL APPETITES



CARNEGIE COMMUNITY
ASSOCIATION
PRESENTS

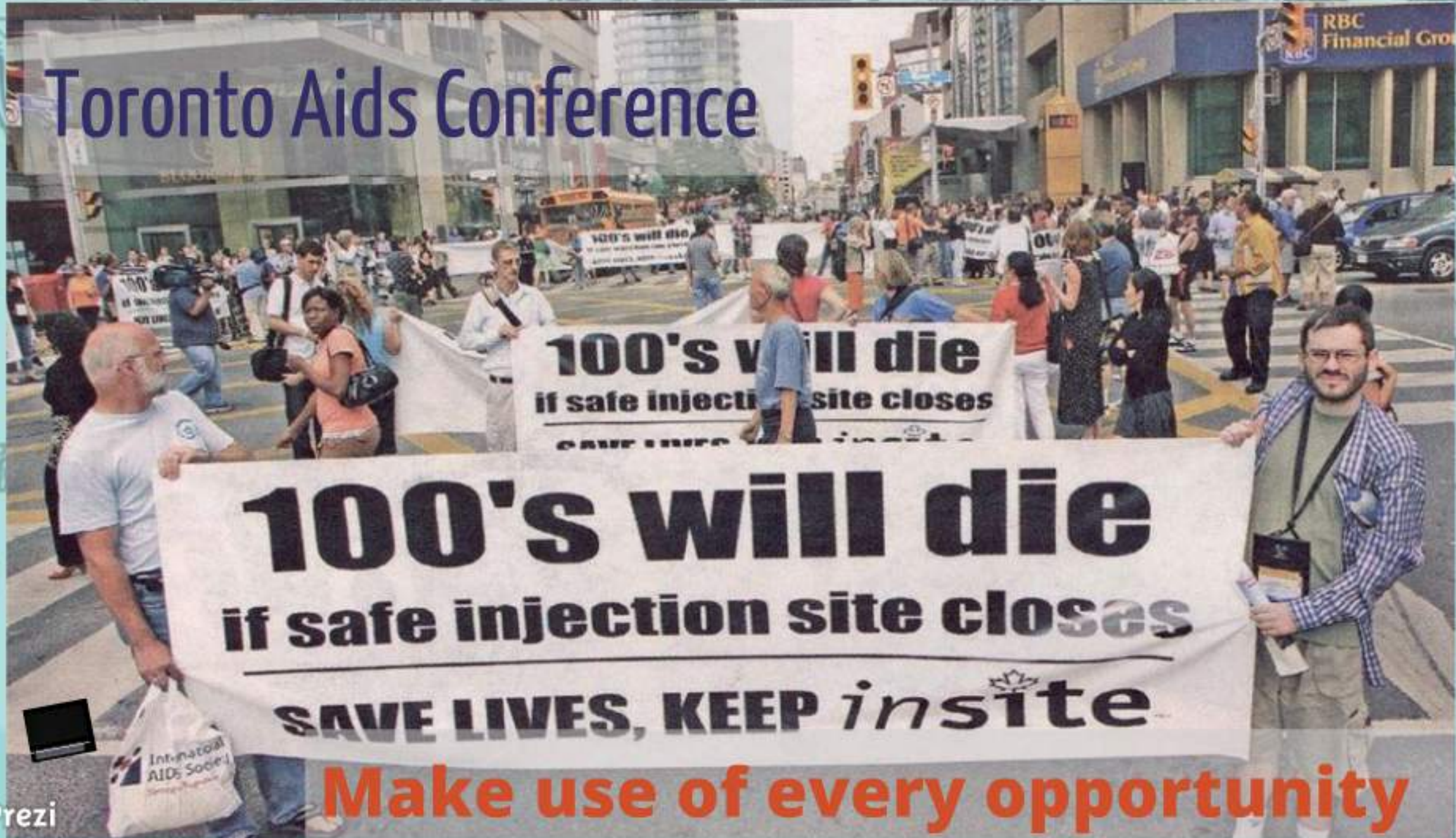


A ONE-DAY INTERNATIONAL
SYMPOSIUM ON SOLUTIONS TO
DRUGS, CRIME AND ADDICTION
IN THE INNER CITY.

FRIDAY, NOVEMBER 20, 1998



Toronto Aids Conference



100's will die
if safe injection site closes
SAVE LIVES, KEEP *insite*

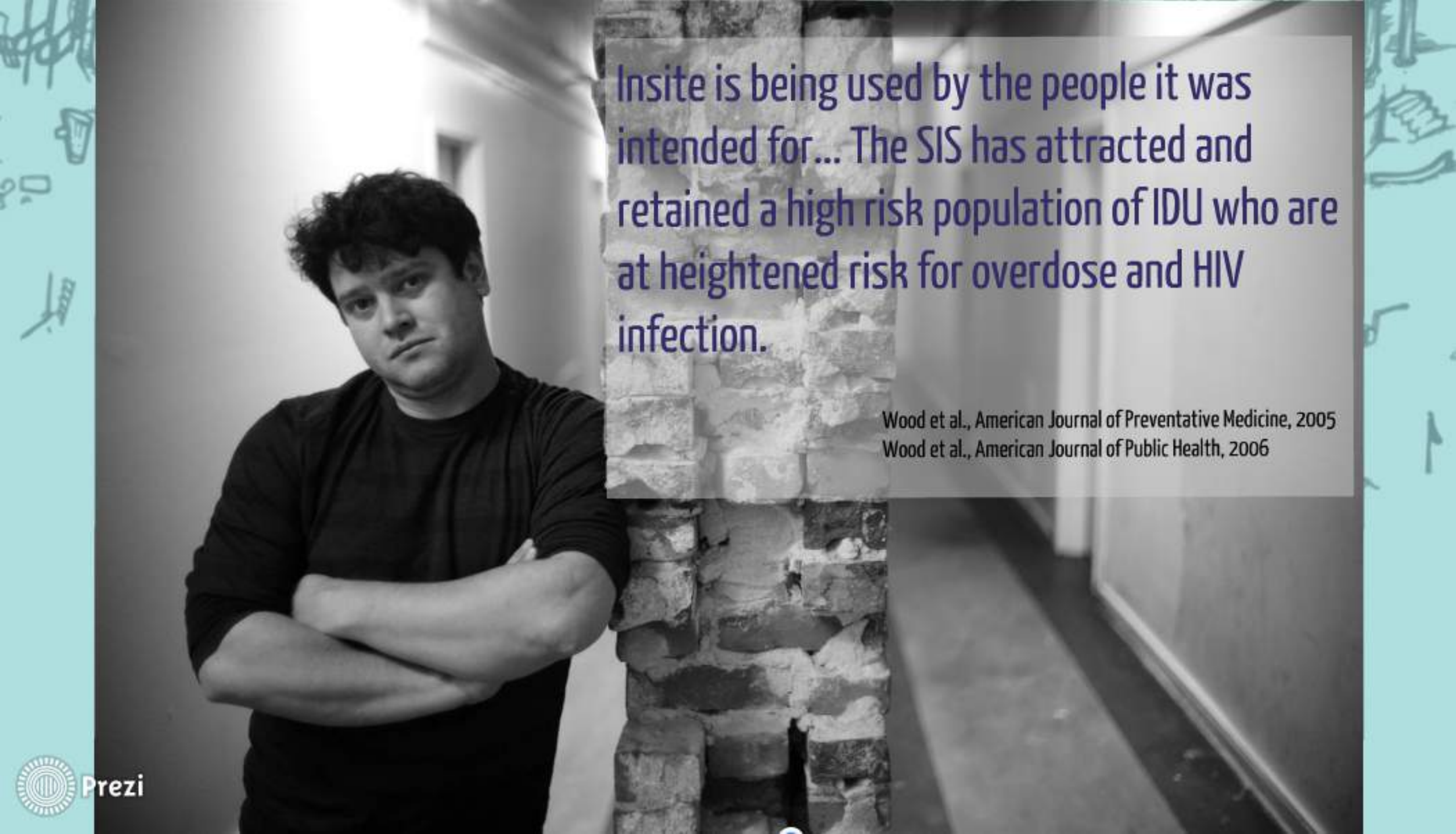
Make use of every opportunity



Insite has **76%** support from Vancouver residents
- (Mustel Research) June 27th 2007

THE EVIDENCE

Over **40** peer-reviewed studies showed that InSite...



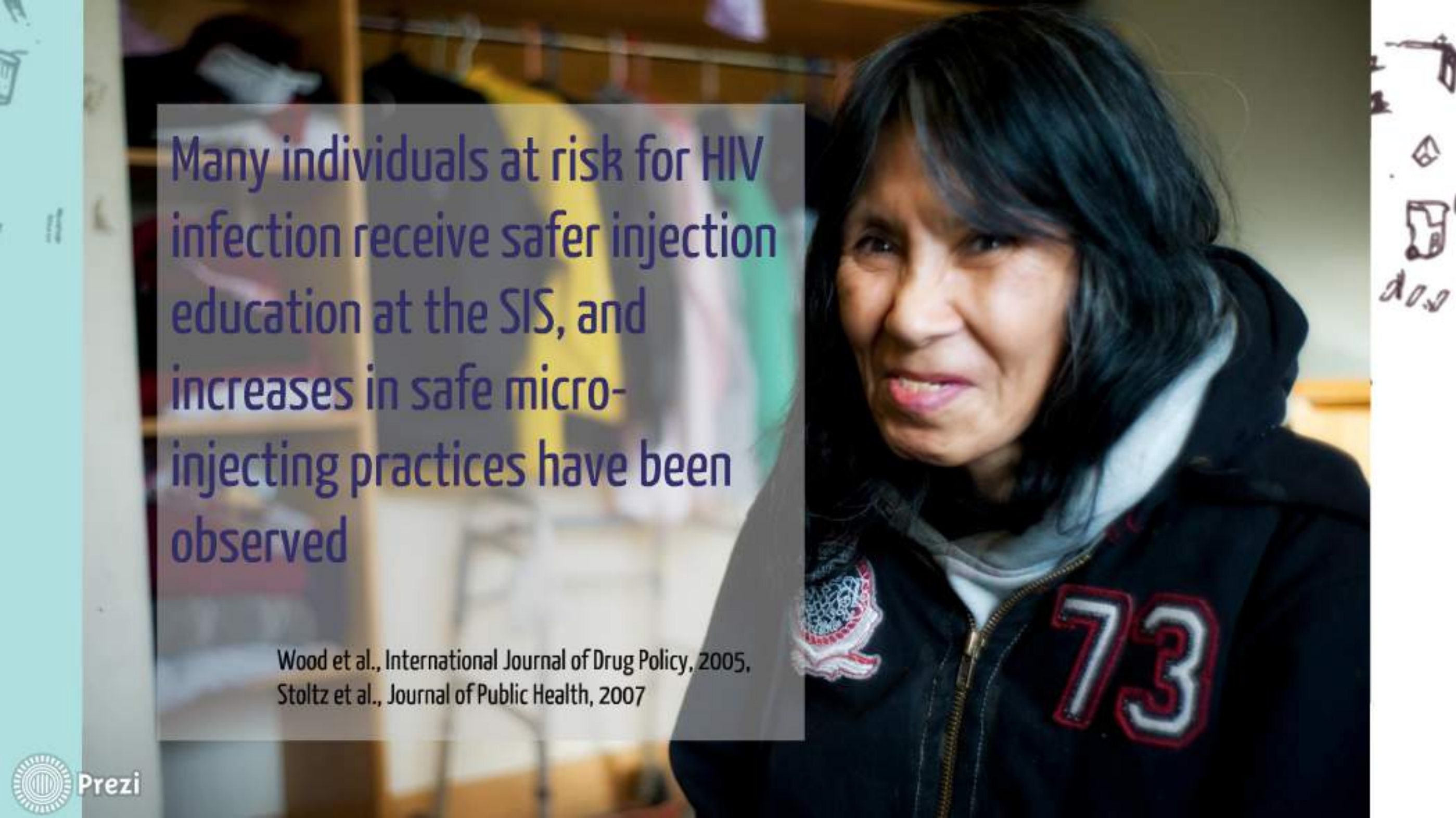
Insite is being used by the people it was intended for... The SIS has attracted and retained a high risk population of IDU who are at heightened risk for overdose and HIV infection.

Wood et al., American Journal of Preventative Medicine, 2005
Wood et al., American Journal of Public Health, 2006

Insite has reduced HIV risk behaviour (syringe sharing)


Wood et al., American Journal of Infectious Diseases, 2005,
Kerr et al., The Lancet, 2005,





Many individuals at risk for HIV infection receive safer injection education at the SIS, and increases in safe micro-injecting practices have been observed

Wood et al., International Journal of Drug Policy, 2005,
Stoltz et al., Journal of Public Health, 2007



Of one group of 1000 users followed, 18% began a detox program at some point during the study period.

Wood et al., New England Journal of Medicine, 2006.



Rate of Detox Service Use
and It's impact among a
Cohort of SIF users - In
the year after Insite
opened, there was a 33%
increase in the uptake of
detox service use.

Wood et al., Rate of detoxification service use and its impact among a
Prezi cohort of supervised injection facility users - Addiction, 2007



The SIS has been associated with reductions in public disorder related to injection drug use. There has been a 45% decrease in open drug use as a result of InSite.

Wood et al., Canadian Medical Association Journal, 2004

Petrar et al., Addictive Behaviors, Stoltz et al., Journal of Public Health, 2007





The establishment of the SIS has NOT prompted adverse changes in community drug use patterns.

Kerr et al., British Medical Journal, 2006





The establishment of the
SIS has NOT prompted
initiation into injection
drug use.

Kerr et al., American Journal of Public Health, 2007



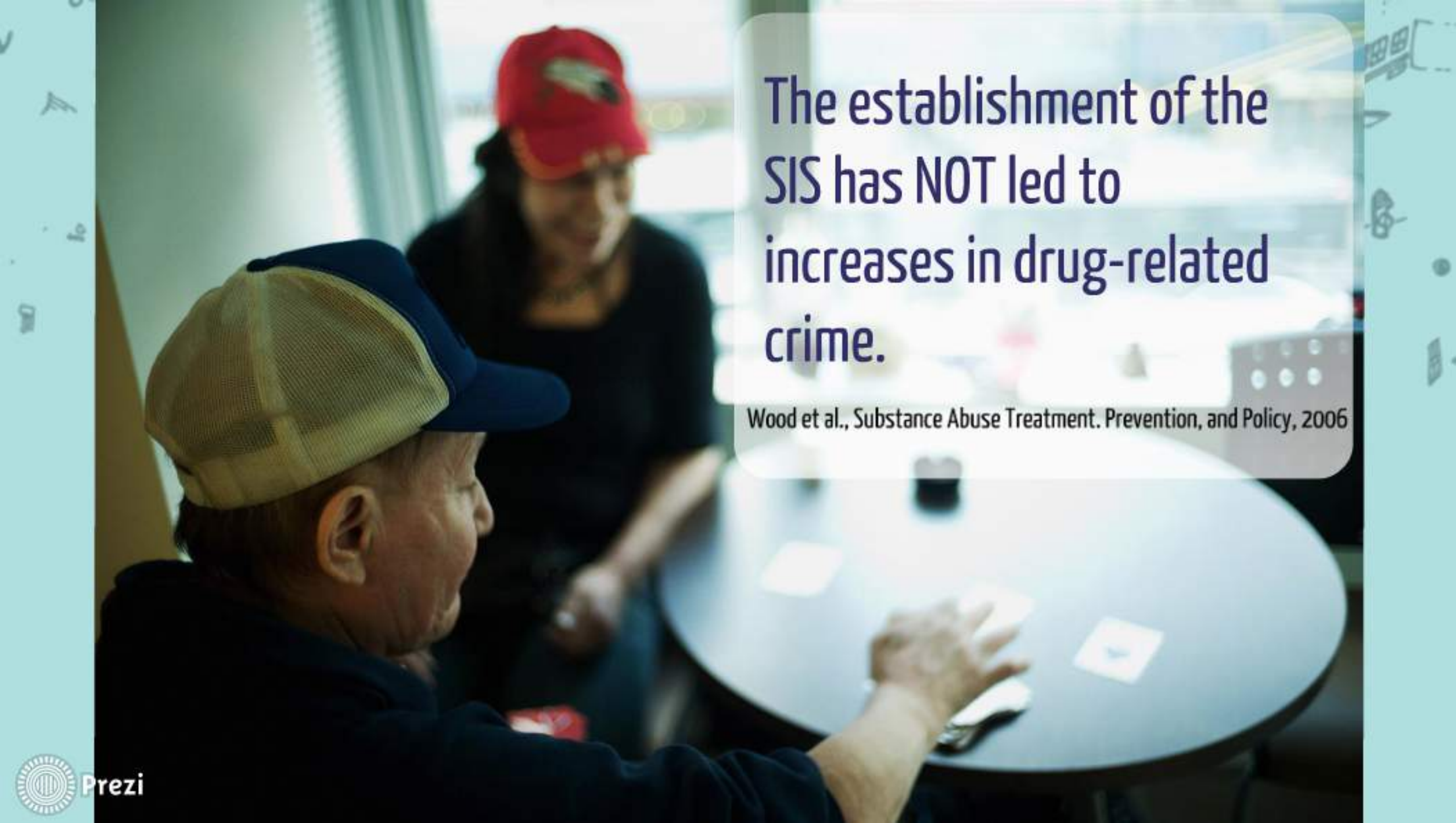


Insite offers medical care for Injection Related Infections.

Wood et al., Canadian Medical Association Journal, 2004
Petrar et al., Addictive Behaviors, Stoltz et al., Journal
of Public Health, 2007



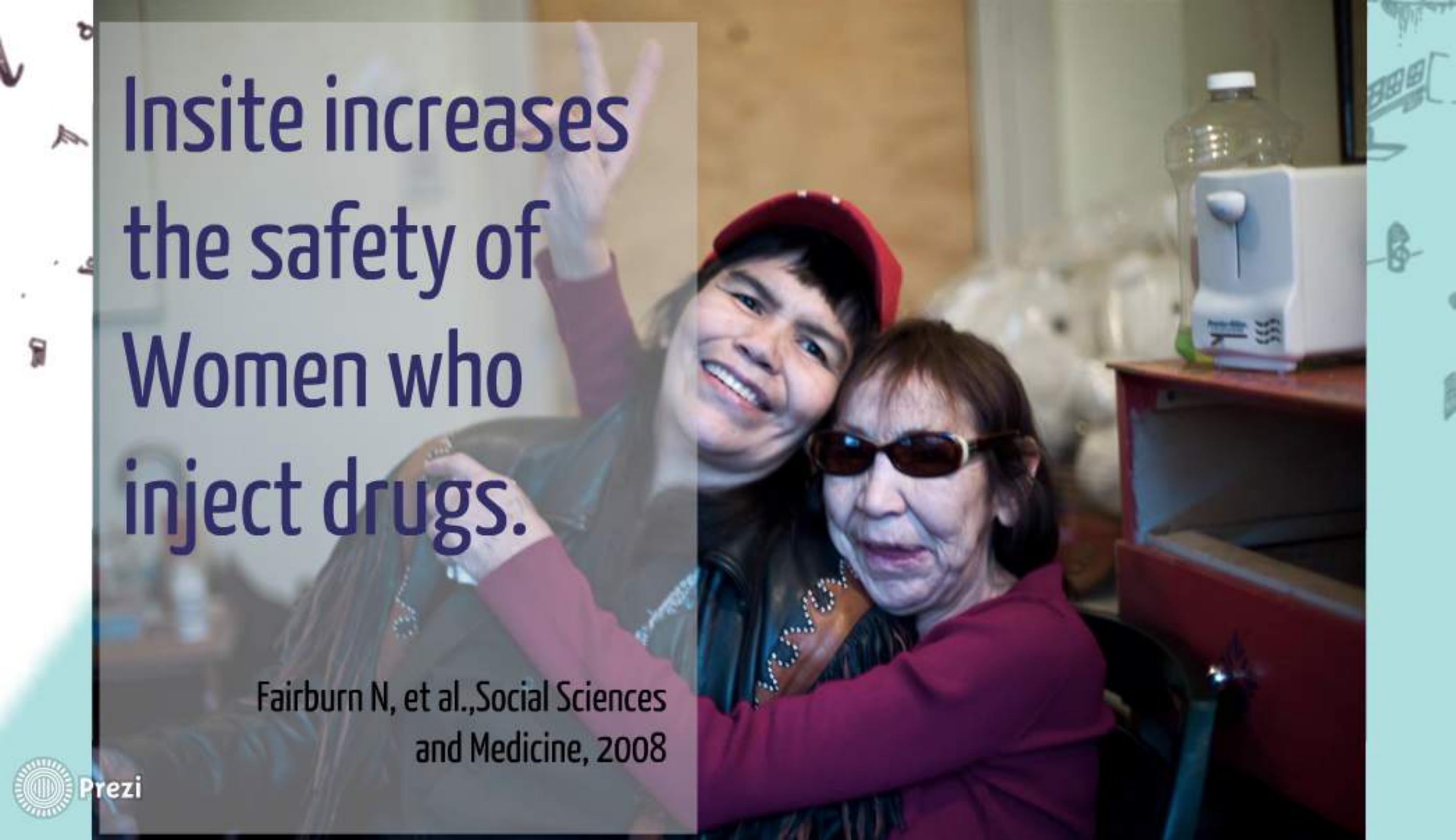
Prezi



The establishment of the
SIS has NOT led to
increases in drug-related
crime.

Wood et al., Substance Abuse Treatment, Prevention, and Policy, 2006



A photograph of two women in an indoor setting. The woman on the left is younger, wearing a red cap and a dark jacket, smiling broadly with her hand raised. The woman on the right is older, wearing sunglasses and a maroon top, embracing the younger woman. In the background, there is a white water dispenser on a red cabinet and a large plastic water bottle. The scene is lit with warm, indoor lighting.

Insite increases the safety of Women who inject drugs.

Fairburn N, et al., Social Sciences
and Medicine, 2008

Insite is associated with improved health and cost savings, even with conservative estimates of efficacy.

Ahmed M. Bayoumi,
CMAJ., November 2008.



Prezi

Insite was associated
with an incremental net
savings of \$14 M over 10
years.

Ahmed M. Bayoumii, CMAJ., November 2008.





"Dehumanization, although a concrete historical fact, is not a given destiny but the result of an unjust order that engenders violence in the oppressors, which in turn dehumanizes the oppressed."

Paulo Freire, Pedagogy of the Oppressed